



Dentapreg™

## Vestibular Splint

Splinting with Dentapreg™ strip always includes several basic procedures repeated in all particular clinical situations:

- Clean the bonding surface of splinted teeth.
- Maintain dry field during all procedures.
- Acid etch the bonding surface using common commercial etching gels or liquids.
- Apply thin layer of a desired adhesive and cure.
- Form and bond Dentapreg™ Splint, cure the splint.
- Finish the splint.



---

### Step 1: Assure Dry Field

- Assure dry field by placing the rubber dam etc.
- 



---

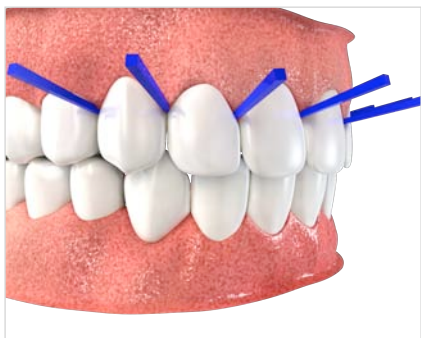
### Step 2: Measure the Length

- Use dental floss or wax rope to measure the length of the splint.
-



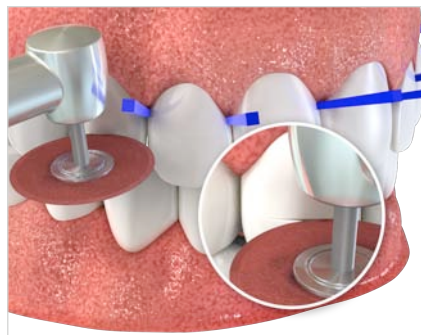
### Step 3: Clean the Teeth

- Clean the teeth with tooth-brush and tooth paste, wash them and dry with air.



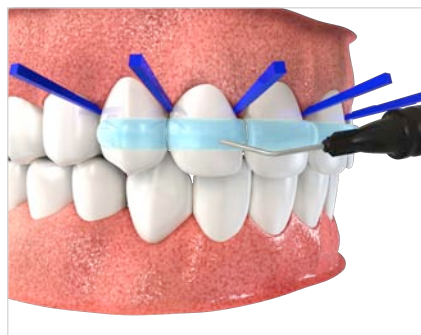
### Step 4: Isolate the Teeth

- Isolate the interproximal spacing using wedges.



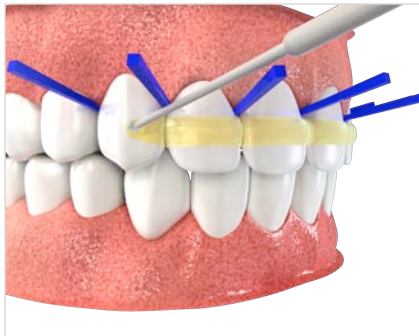
### Step 5: Prepare the Teeth

- For permanent splint it is recommended to make light preparation to the enamel as this ensures ensures better adhesion between the strip and the teeth.



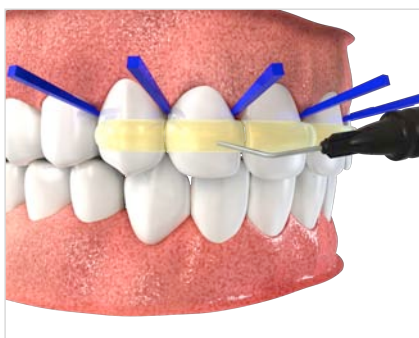
### Step 6: Etch the Teeth

- Etch the bonding surface of splinted teeth for approx. 30 second (37% phosphoric acid etching agent)
- Rinse throughoutly and gently dry with a flow of dry air.



#### Step 7: Apply Adhesive

- Apply adhesive system\* to the surface of the teeth coming into contact with the fibers. Do not light cure!



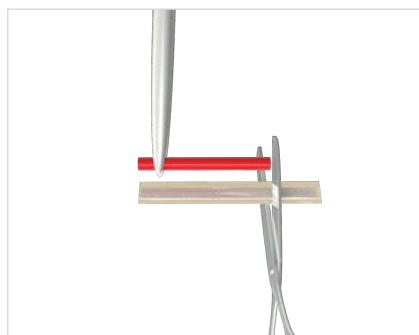
#### Step 8: Apply Flow Composite

- Apply a thin layer of hybrid/flowable composite along desired splint area. Do not omit interproximal spaces. Do not light cure!



#### Step 9: Open the Blister

- Separate the single strip from the blister breaking the perforated ligament similarly to blister packaged drugs.



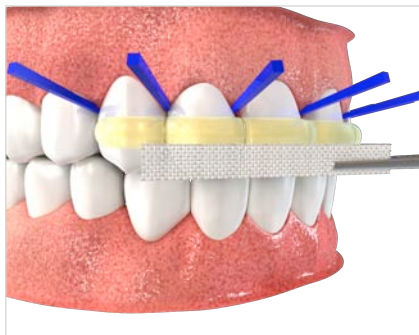
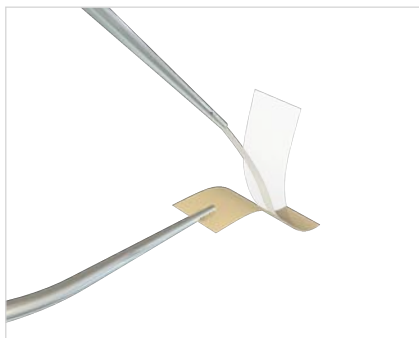
#### Step 10: Cut the Strip

- Remove the strip from the blister, cut the strip with regular scissors.
- Place the rest of leftover trimmed strip back into the blister and re-cover with foil. This will prevent premature polymerization of the strip.



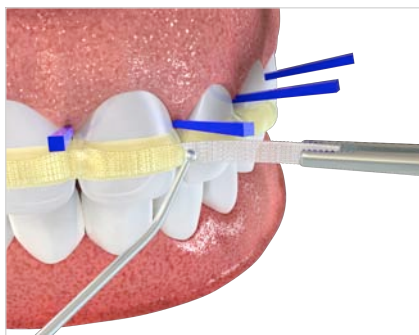
### Step 11: Peel Back the Waxed and Transparent Foil

- Peel back the waxed paper and transparent foil.



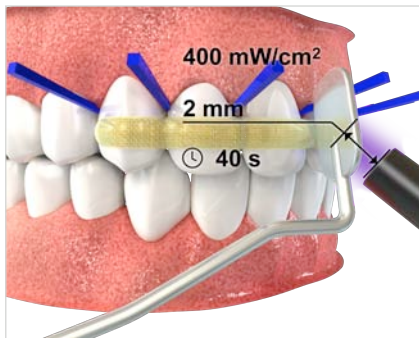
### Step 12: Place the Strip

- Place and adapt trimmed Dentapreg™ strip against surfaces of the prepared teeth.



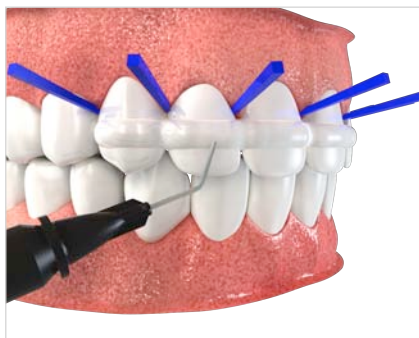
### Step 13: Adapt the Strip

- Sink the Dentapreg™ strip into the layer of hybrid/flowable composite.



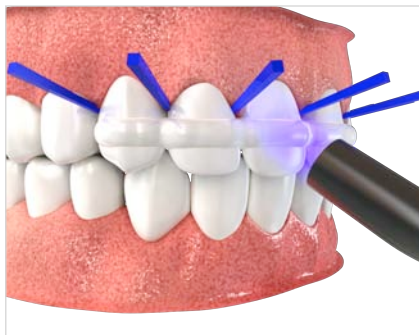
#### Step 14: Light Cure the Strip

- Light cure each end of the strip. When using common halogen light curing lamp light cure each end for 40 seconds. With LED lamp cure each end for 20 seconds. Cure the rest of the strip for minimum of 40 seconds.



#### Step 15: Mask the Strip

- Apply a layer of hybrid/flowable composite over the cured splint. This smooth surface preserves good hygienic conditions. The thickness of the outer layer should be approximately 0.3 – 0.5 mm.



#### Step 16: Light Cure the Flow Composite

- Light cure the hybrid/flowable composite according to manufacturer's instruction.



#### Step 17: Final Adjustment

- Remove excess of hybrid/flowable composite.



### Step 18: Polish the Splint

- Final polishing of outer layer may be performed with composite polishing burs, points or wheels. This step will ensure patient's comfort as well as esthetics and oral hygiene



- Following sequence for final polishing is possible:
- Diamond paste 3  $\mu$ m.



- Diamond paste 1  $\mu$ m.



- Aluminum oxide paste.



- 
- Final vestibular splint
- 

## Dentapreg™ Splint Removal



---

### Step 1: Remove the Splint

- Asses tooth mobility.
  - If tooth is stable, use an orthodontic bracket remover (or similar tool) and remove Dentapreg™ strip from teeth.
- 



---

### Step 2: Polish the Teeth

- Remove remaining resin and polish the teeth.
-

---

All rights reserved ©  
ADM a.s., U Vodarny 2, 616 00 Brno, Czech Republic  
[www.dentapreg.com](http://www.dentapreg.com)