

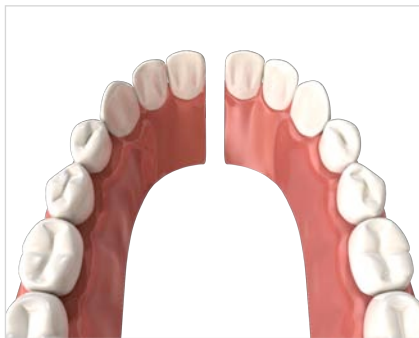


Dentapreg™

## Repair of Broken Denture - Mandible

Repairing or reinforcing removable dentures with Dentapreg™ strip always includes several basic procedures repeated in all particular clinical situations:

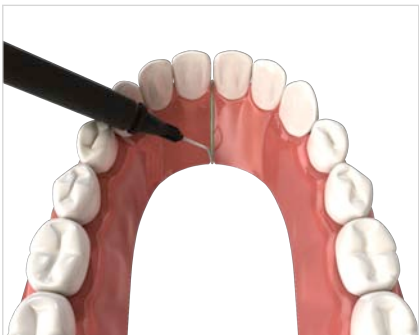
- Treatment of removable denture
- Measure the length of used Dentapreg™ Repair
- Remove Dentapreg™ from the blister
- Cut Dentapreg™ with regular scissors
- Light cure the strip
- Apply a thin layer of denture base resin
- Place cured Dentapreg™ strip into the denture base resin
- Cover the strip a thin layer of denture base resin
- Polymerize the removable denture



---

### Step 1: Stick Broken Denture

- Broken denture.



- Stick together two broken parts of removable denture using stick wax.
-



---

**Step 2: Make a Gypsum Pad**

- Prepare the gypsum pad for removable denture.
- 



---

**Step 3: Treat Broken Denture**

- Separate the glued-up broken parts of removable denture and grind down the broken edges of both parts of denture.
- 



---

**Step 4: Prepare the Canal(s)**

- Reduce the denture thickness in the desired area and cut the canal(s) of appropriate length, width and depth serve for reinforcing of removable denture with Dentapreg™ strip and veil.
- 



---

**Step 5: Isolate the Gypsum Pad**

- Isolate the gypsum pad and place two broken parts of removable denture on the gypsum pad.
-



---

#### Step 6: Measure the Length

- Use dental floss or wax rope for measurement of required Dentapreg™ Repair strip length.
- 



---

#### Step 7: Open the Blister

- Separate the single strip from the blister breaking the perforated ligament similarly to blister packaged drugs.
  - Using a sharp instrument (scissors, knife, razor blade, scalpel), perforate the foil of the blister pack along 3 sides.
- 



---

#### Step 8: Cut the Strip

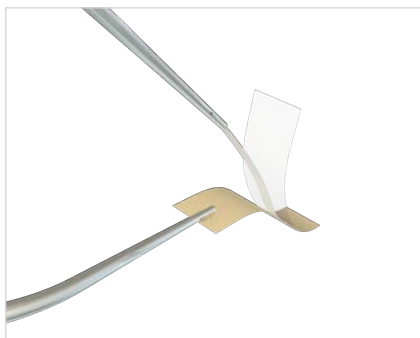
- Remove the strip from the blister, cut the strip with regular scissors.
  - Place the rest of leftover trimmed strip back into the blister and recover with foil. This will prevent premature polymerization of the strip.
-



---

**Step 9: Peel Back the Waxed and Transparent Foil**

- Peel back the waxed paper and transparent foil.



---

**Step 10: Apply Denture Base Resin**

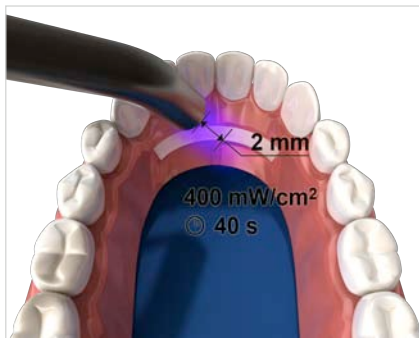
- Stick two broken parts of denture with denture base resin.



---

**Step 11: Insert the Strip**

- Insert Dentapreg™ Repair strip(s) to the canal(s).



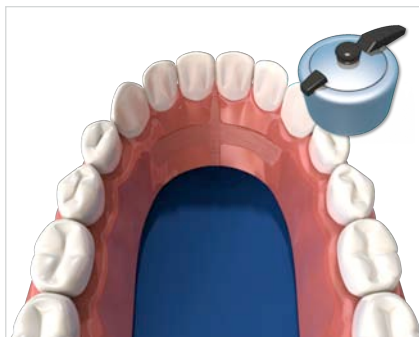
### Step 12: Light Cure the Strip

- Light cure the strip. When using common halogen light curing lamp light cure 1 cm of the strip for 40 seconds. With LED lamp cure it for 20 seconds.



### Step 13: Cover the Strip

- Cover the cured strips with denture base resin.



### Step 14: Polymerize the Denture

- Polymerize the repaired denture according to denture base resin manufacturer instructions.



### Step 15: Polish the Denture

- Polish the repaired parts of the denture. It is recommended to use polishing wheels.



---

### Step 16: Repaired Denture

- Final solution of repaired removable denture.
-

---

All rights reserved ©  
ADM a.s., U Vodárny 2, 616 00 Brno, Czech Republic  
[www.dentapreg.com](http://www.dentapreg.com)